

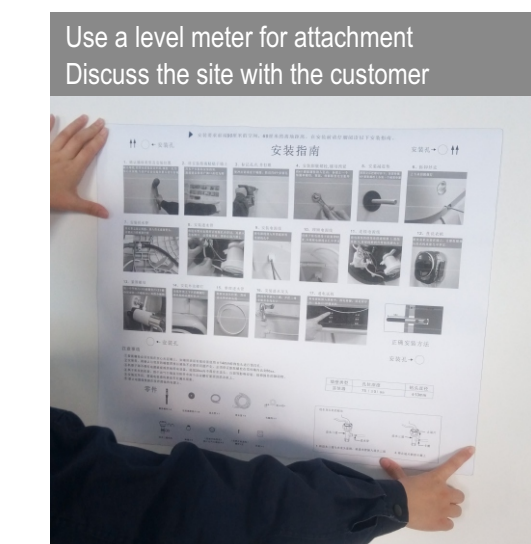
▶ Breast-high location is convention for installation.

# Installation Instruction

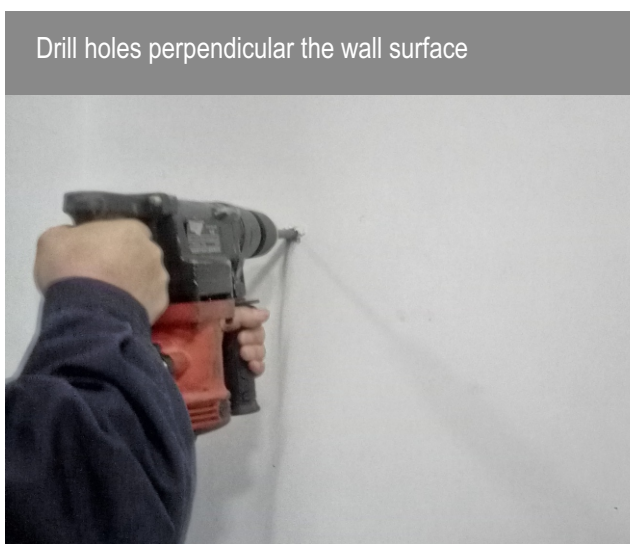
## 1. Determine the location for installation



## 2. Attach the installation instruction



## 3. Mark the hole spot and drill holes



## 4. Insert anchor bolts



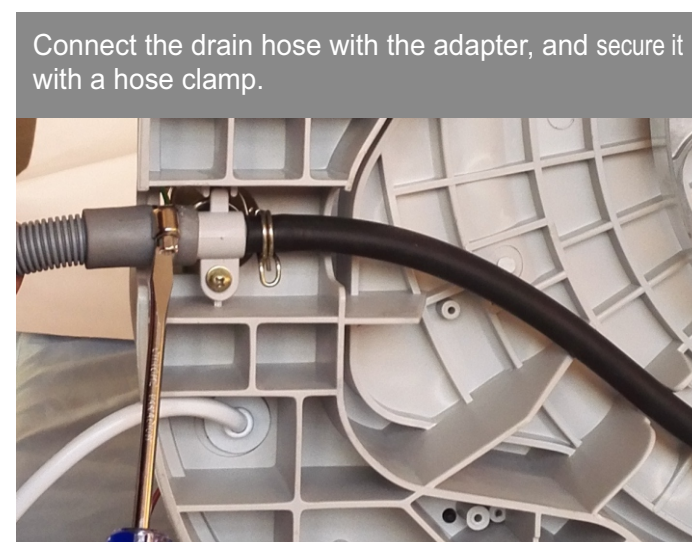
## 5. Insert cushion pads



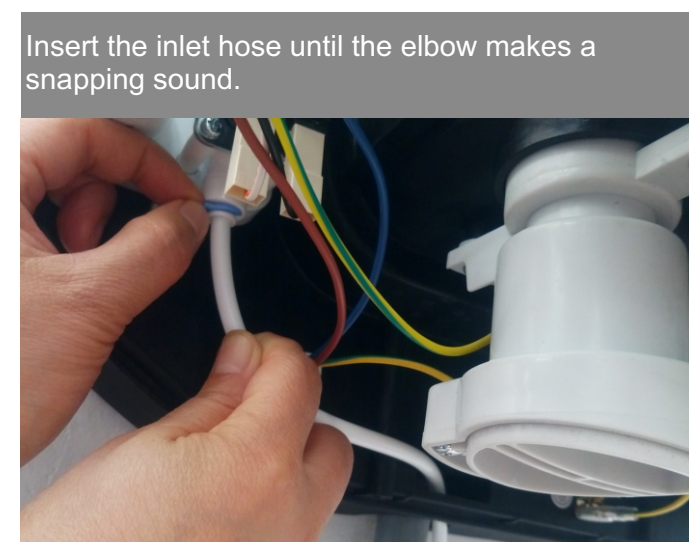
## 6. Disassemble the body



## 7. Connect the drain hose



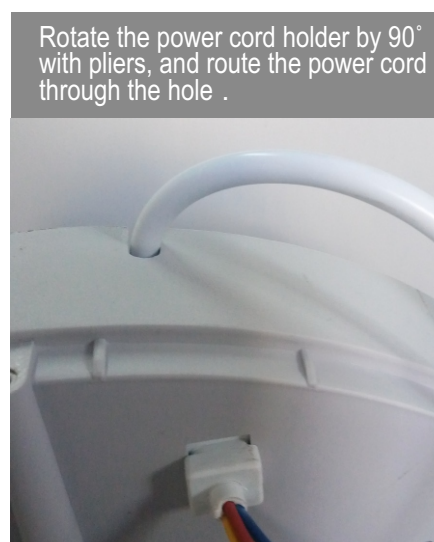
## 8. Connect water inlet hose



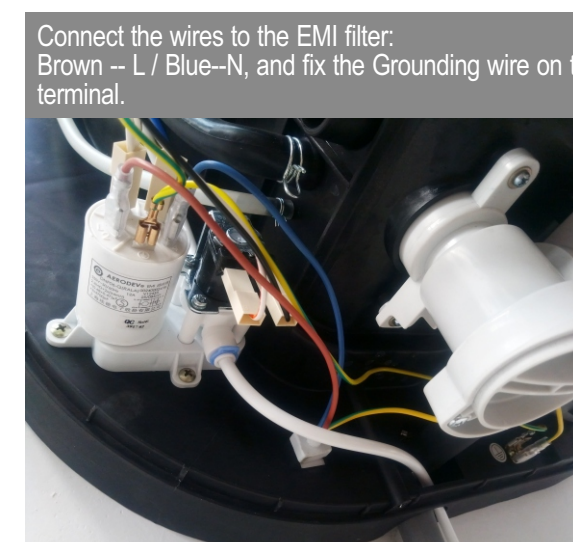
## 9. Install the power cord



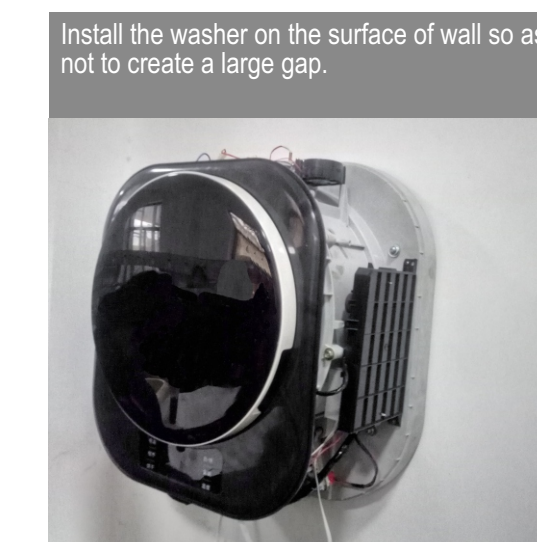
## 10. Route the power cord



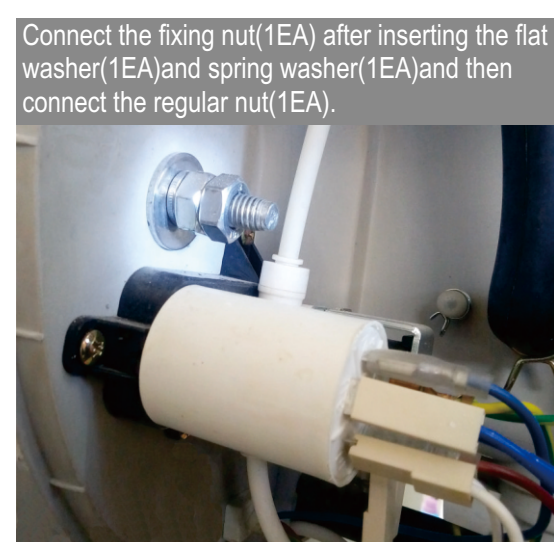
## 11. Connect the power cord



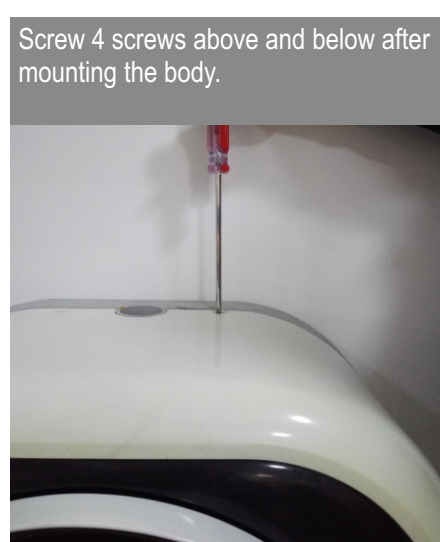
## 12. Install the washing machine



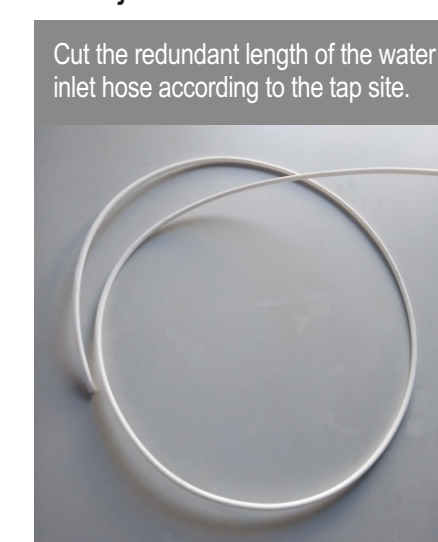
## 13. Fasten nuts with a φ 17 spanner



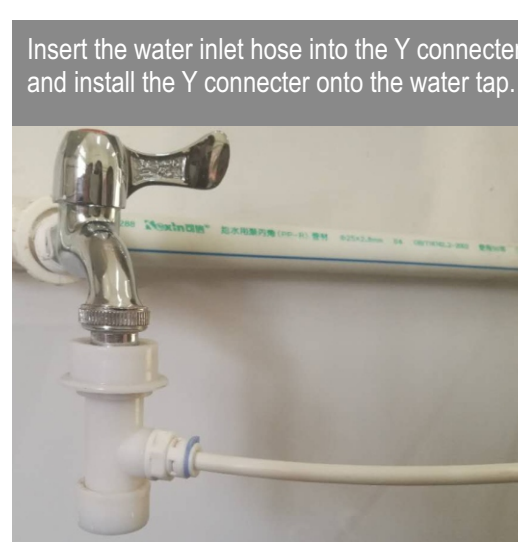
## 14. Mount the body



## 15. Adjust the water inlet hose



## 16. Connect the inlet hose



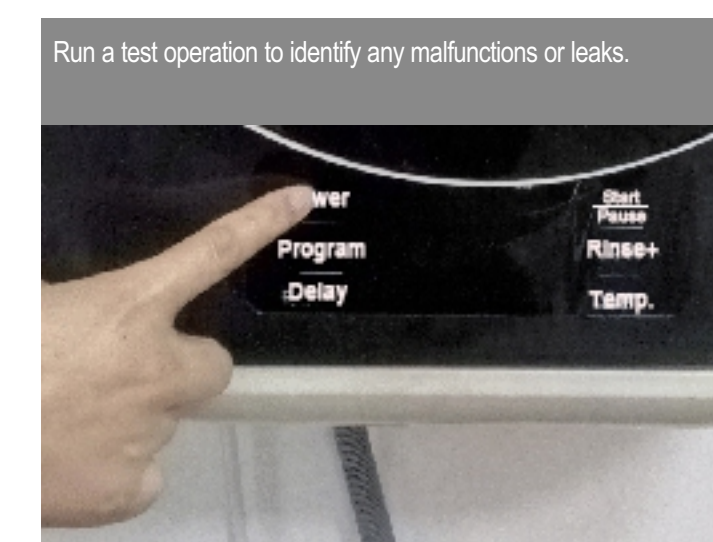
## 17. Attach the hose guide



## 18. Organize the hose

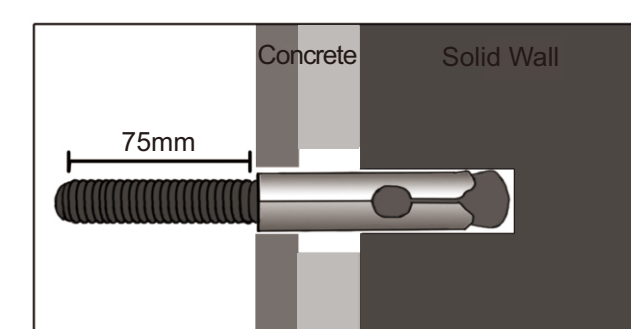


## 19. Test operation



## NOTES:

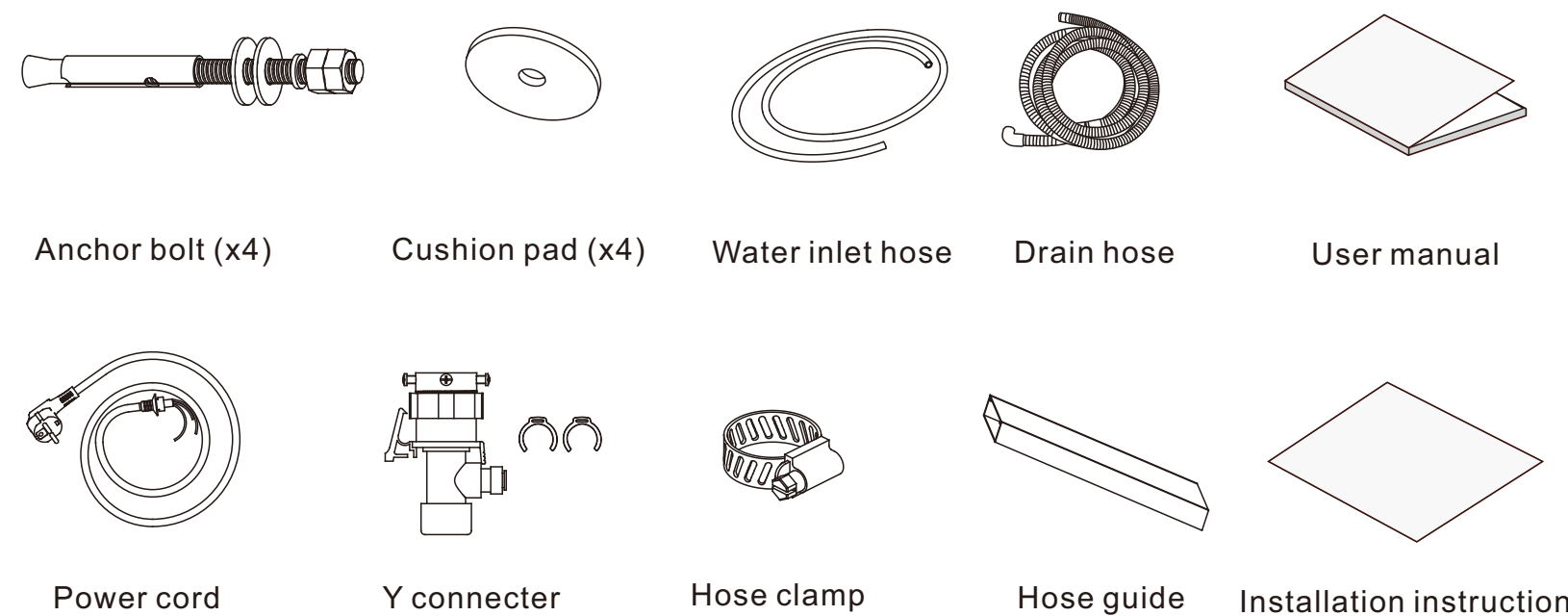
- The expansion bolt must be installed on the solid cement wall. If there is tile on the wall surface, a φ14mm special drill bit shall be used for pre drilling.
- Before installation, please confirm the wall thickness with the neighbor to avoid unnecessary problems. It must be ensured that the anchor bolts reach 50mm in the solid concrete wall.
- There shall be no power socket or other electrical equipment at the lower part of the machine, and there shall be no faucet, table and other obstacles affecting the installation and maintenance operation within 30mm of the bottom.
- After installation, power on the machine to check whether there is water leakage.
- Do not connect the power cord to the power supply without grounding.



Correct installation method

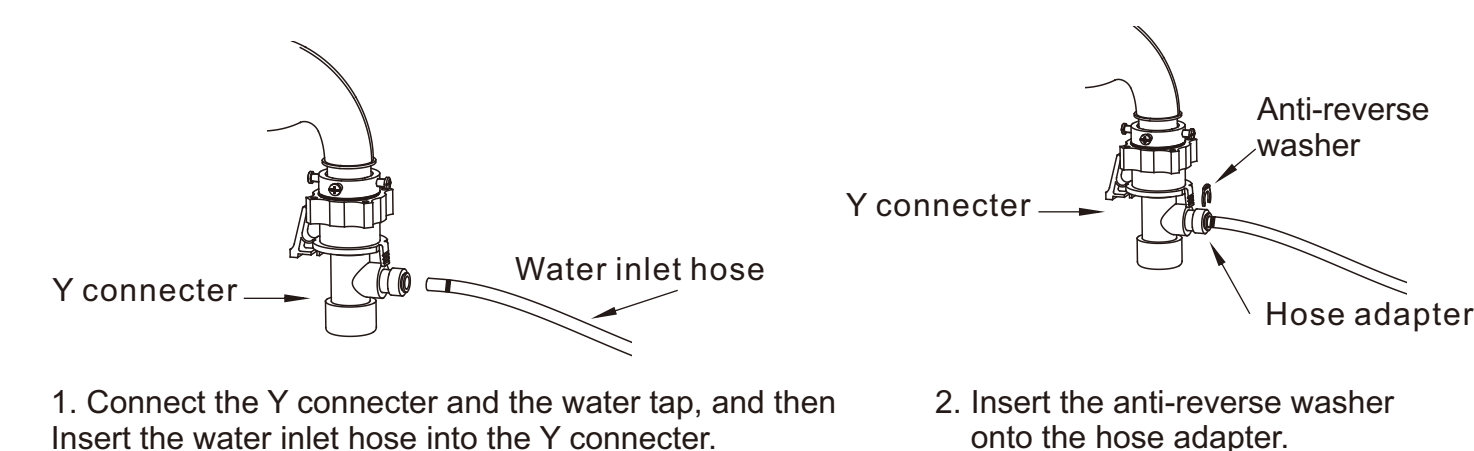


## PARTS



Wall Type	Depth of Hole	Bit Diameter of Hammer Drill
Solid Concrete Wall	75(±5)mm	φ13mm

## Install the water inlet valve





Power

Program

Delay

Wash Rinse Spin

O<sub>3</sub>

03:00

Normal Gentle Quick Hygienic Self-clean

Start

Pause

Rinse+

Temp.